

SatelliteTM
CERAMIC
The New Generation Tiles

2011

320x250mm | 250x250mm

touch
your style

8-A NATIONAL HIGHWAY, OPP. 132 KVA GEB POWER SUB STATION,
At - LALPAR, MORBI - 363 642 (Guj.) INDIA
Ph : +91-2822-240675 / 242675, Fax : +91-2822-242775 / 294903
E-mail : info@satelliteceramic.com

www.satelliteceramic.com

Satellite
CERAMIC
The New Generation Tiles



325x250mm

TM
Satellite
CERAMIC
The New Generation Tiles

325x250mm | 250x250mm

From the desk of Directors

The ability to conquer the market & show with self confidence is not difficult to acquire. It is not a gift besed by providence on only a rarely endowed individual. Only few can develop their own latent capacity if they have sufficient desire to do so.

The new Products are decorated by cerative design in such a manner that it counts the way your vision of life to be portrayed. These will aid to enrich the precious moments you create on own wall.

The entire team of Satellite is fully educated and experienced. They are engaged since last many year in ceramic field. The main motto of company is to give best quality products to market and creat it's position in the market. The quality is maintained by the fully new technology.

Last but not the least, we are bound to give something new
Find your Imagination at Satellite

COMPANY PROFILE

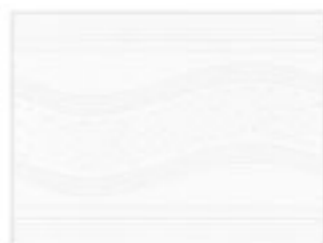
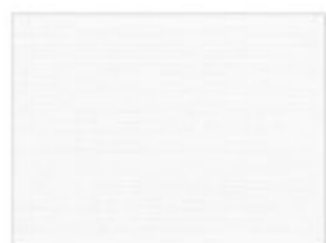
www.satelliteceramic.com

INDEX



touch
your style

6	White Kitchen Concepts
10	Ivory Kitchen Concepts
14	White Glossy Concepts
26	Ivory Glossy Concepts
36	Highlighter Series
42	Light-Dark Concepts
52	Stripes Series
53	250x250 Waves Series
54	250x250 Plain Colours



6040-A, 6040-B, 6040-C

6075-A, 6078-B, 6078-C

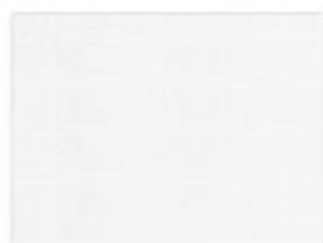
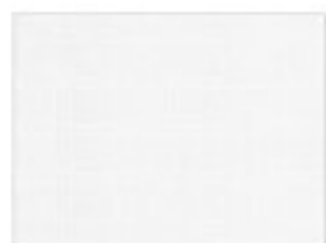
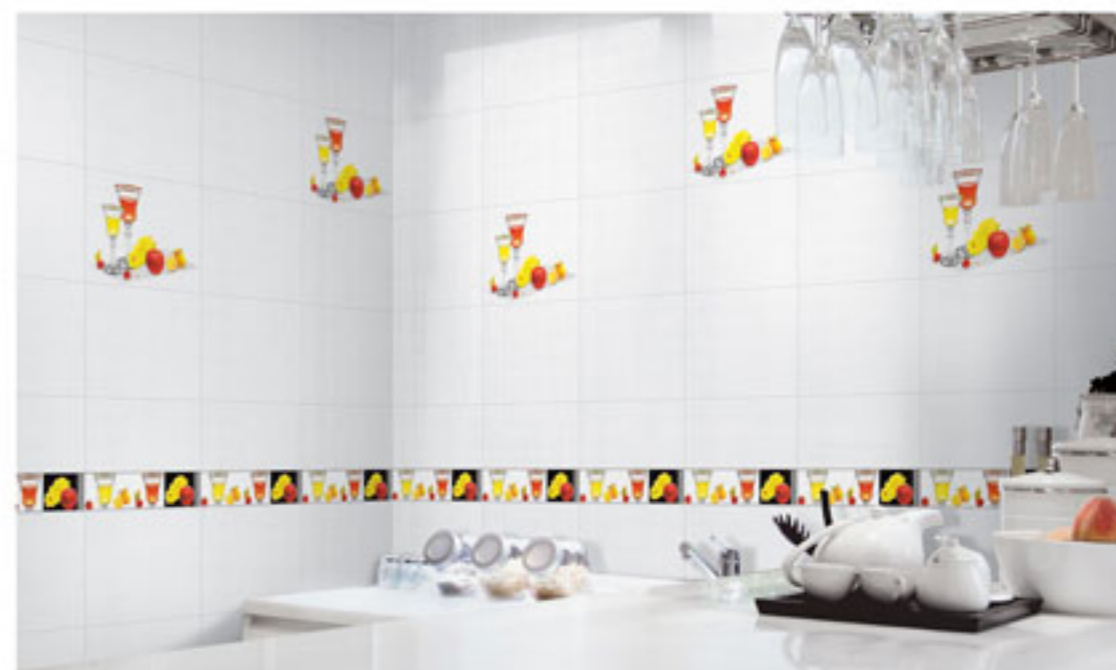
6311-A, 6311-B, 6311-C



6351-A, 6351-B, 6351-C

6351-A, 6352-B, 6352-C

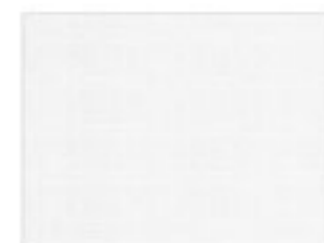
6351-A, 6353-B, 6353-C



6351-A, 6354-B, 6354-C

6351-A, 6355-B, 6355-C

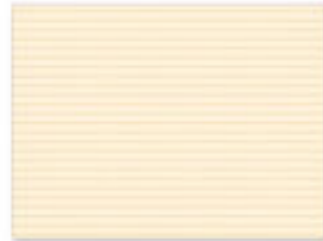
6351-A, 6356-B, 6356-C



6351-A, 6357-B, 6357-C

6351-A, 6358-B, 6358-C

6351-A, 6359-B, 6359-C



7040-A, 7040-B, 7040-C

7066-A, 7066-B, 7066-C

7311-A, 7311-B, 7311-C



7351-A, 7351-B, 7351-C

7351-A, 7352-B, 7352-C

7351-A, 7353-B, 7353-C



7351-A, 7354-B, 7354-C

7351-A, 7355-B, 7355-C

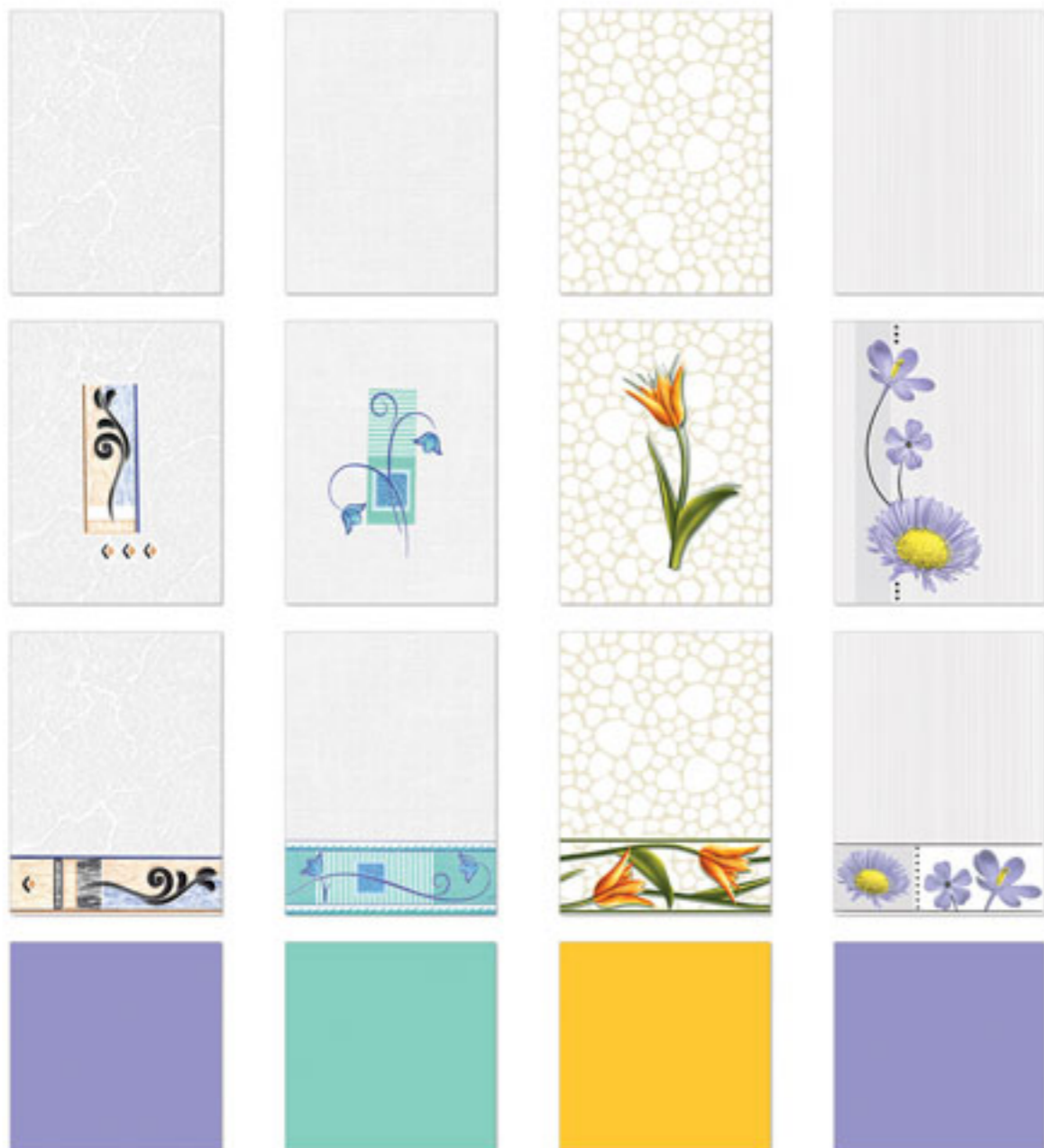
7351-A, 7356-B, 7356-C



7351-A, 7357-B, 7357-C

7351-A, 7358-B, 7358-C

7351-A, 7359-B, 7359-C

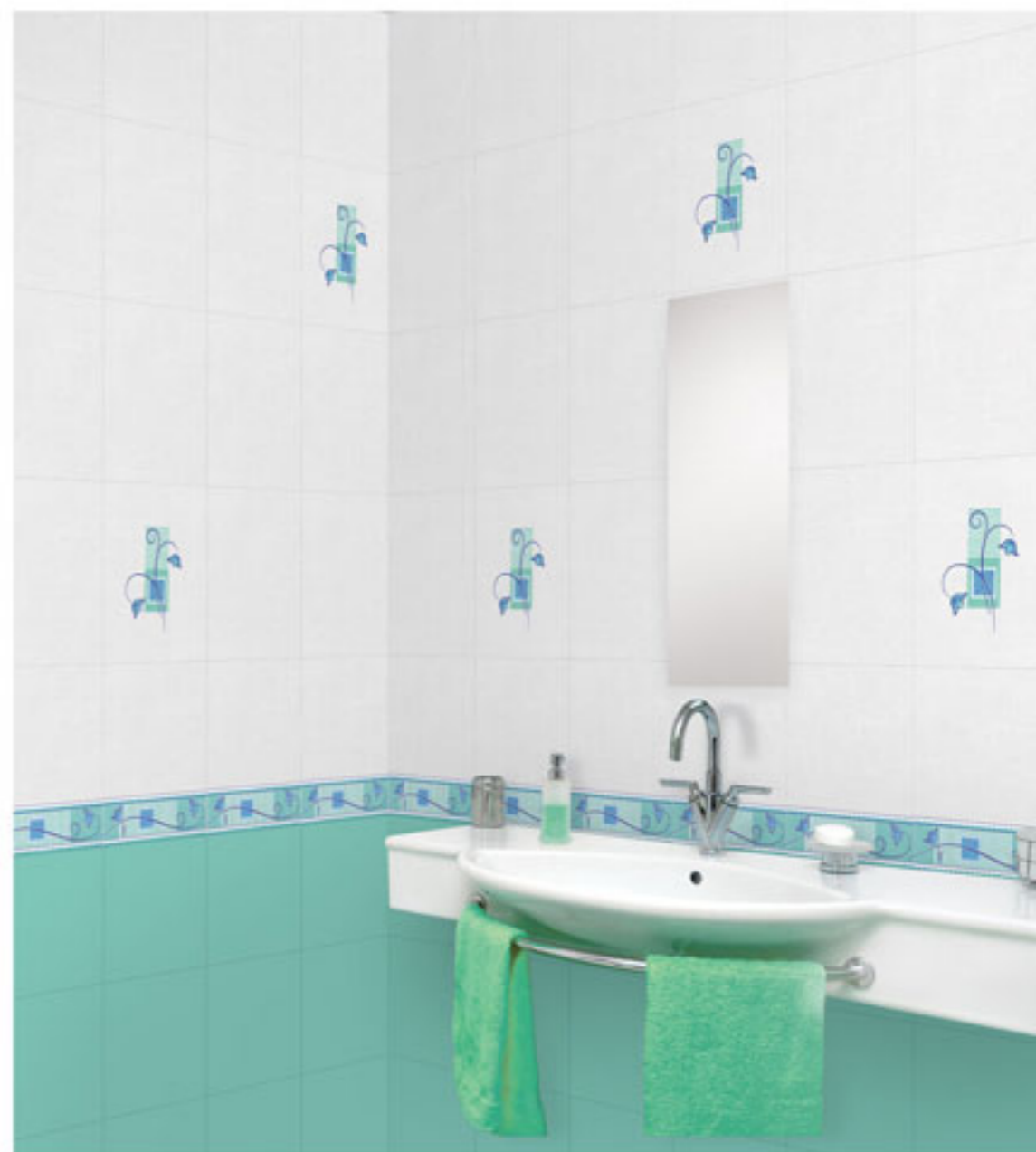


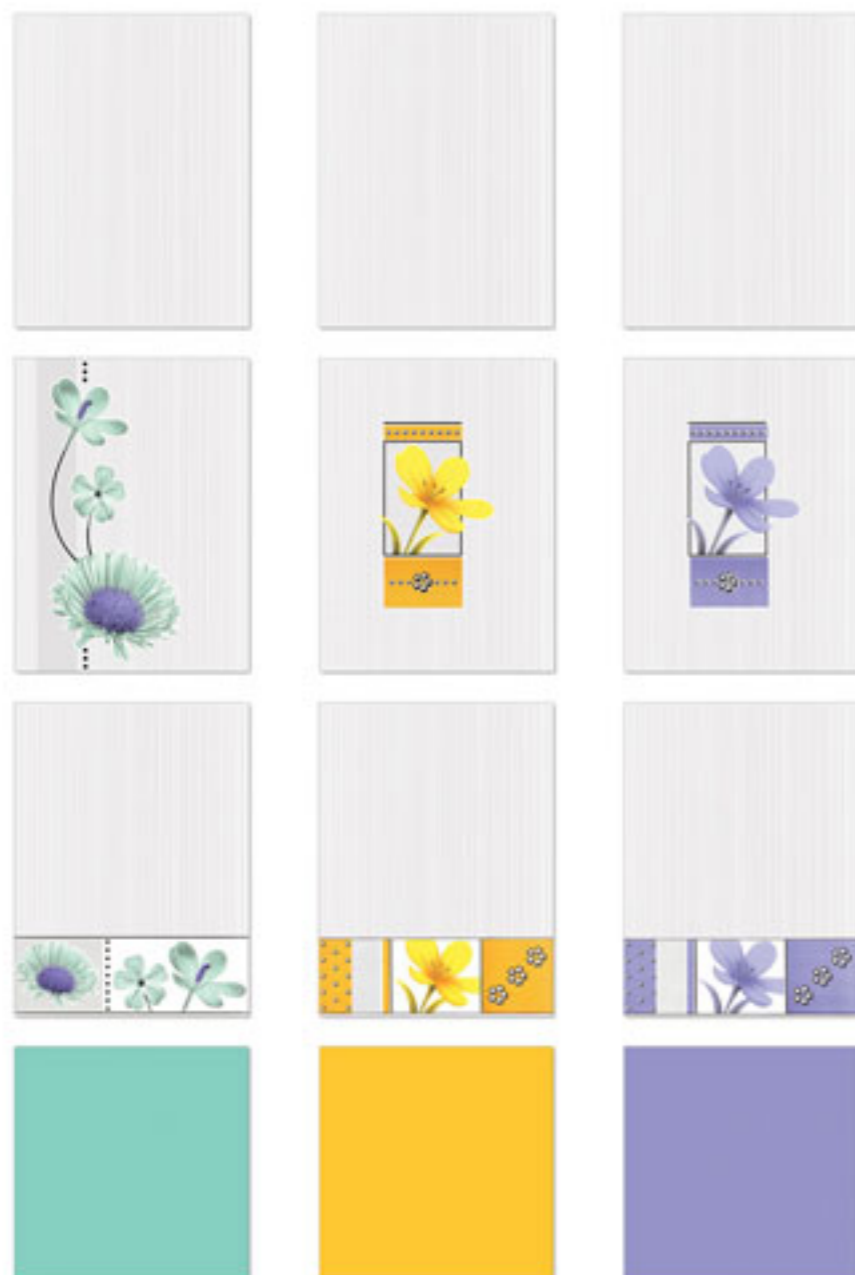
6001-A, 6001-B, 6001-C
Alpine Blue

6015-A, 6015-B, 6015-C
Aqua Marine

6043-A, 6043-B, 6043-C
Walker Yellow

6067-A, 6067-B, 6067-C
Alpine Blue

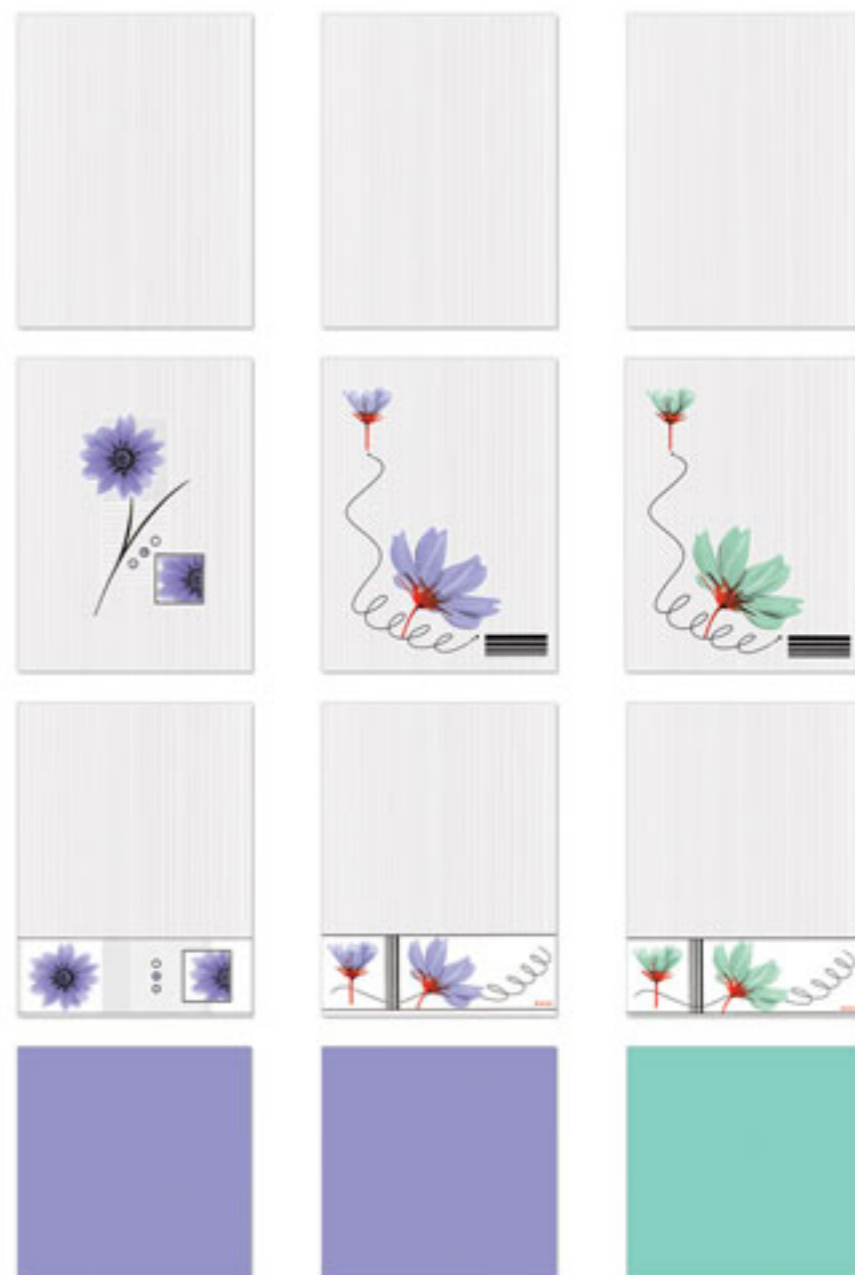




6067-A, 6068-B, 6068-C
Aqua Marine

6067-A, 6069-B, 6069-C
Walker Yellow

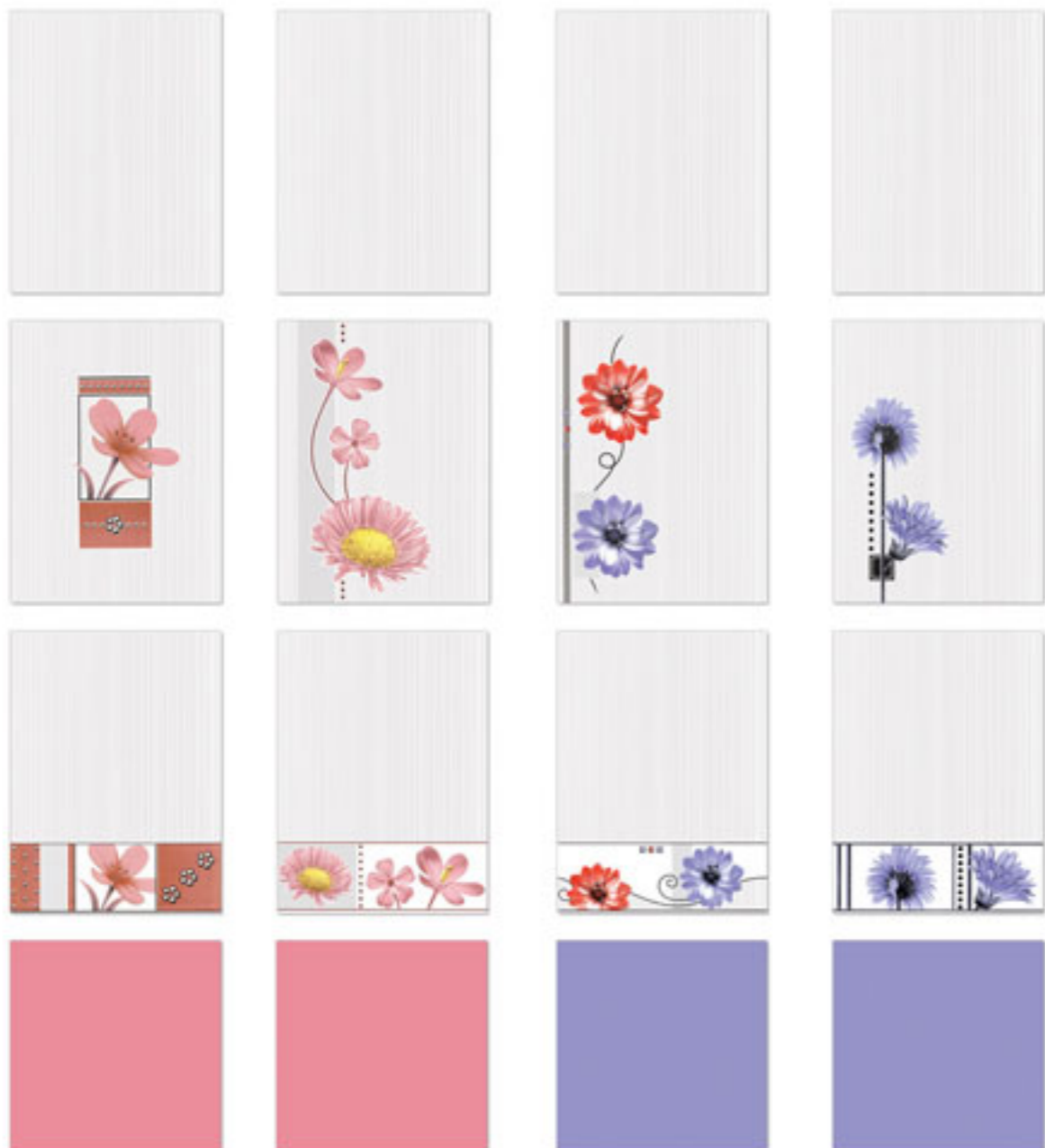
6067-A, 6071-B, 6071-C
Alpine Blue



6067-A, 6072-B, 6072-C
Alpine Blue

6067-A, 6073-B, 6073-C
Alpine Blue

6067-A, 6074-B, 6074-C
Aqua Marine

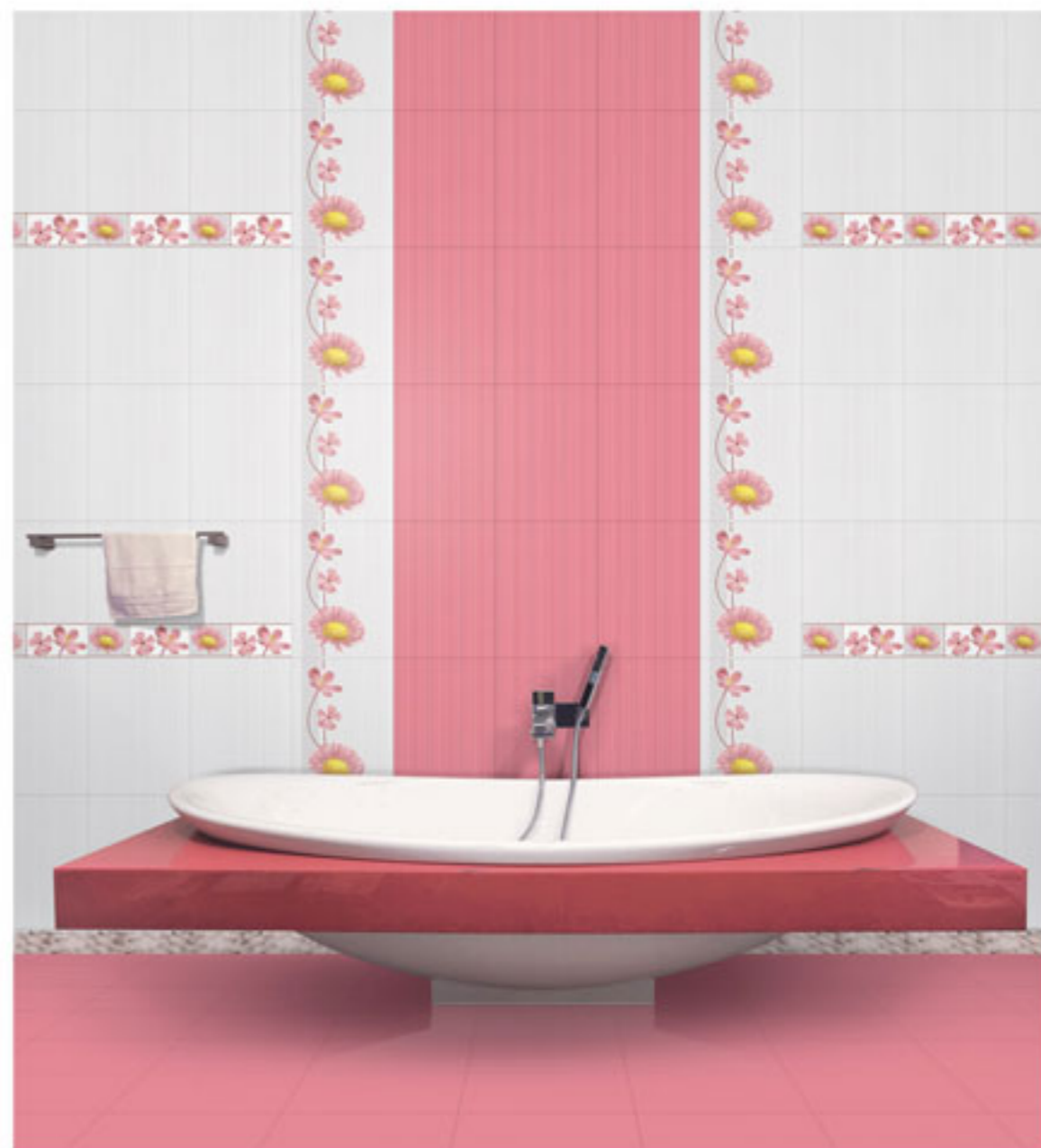


6067-A, 6079-B, 6079-C
Magenta

6067-A, 6080-B, 6080-C
Magenta

6067-A, 6081-B, 6081-C
Alpine Blue

6067-A, 6083-B, 6083-C
Alpine Blue





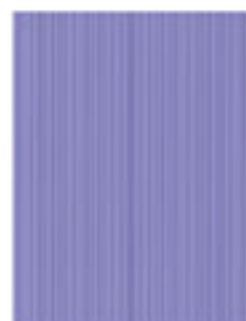
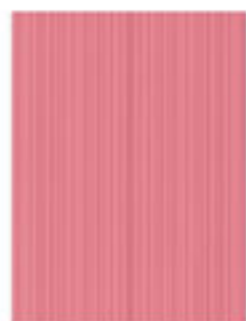
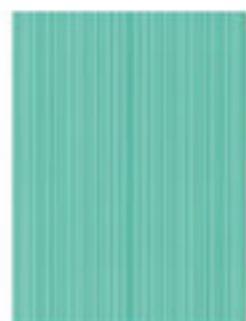
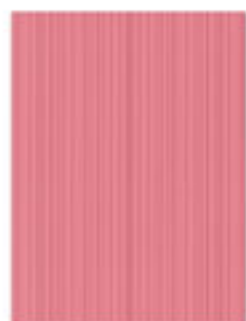
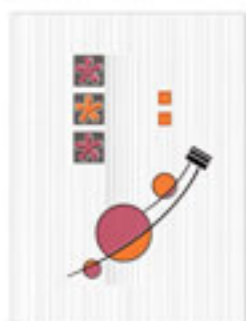
6200-A, 6200-B, 6200-C
Dark-M.Green

6200-A, 6201-B, 6201-C
Dark-Aqua Marine

6200-A, 6202-B, 6202-C
Dark-Walker Yellow

6200-A, 6203-B, 6203-C
Dark-Alpine Blue





6200-A, 6204-B, 6204-C
Dark-Magenta

6200-A, 6205-B, 6205-C
Dark-Aqua Marine

6200-A, 6206-B, 6206-C
Dark-Magenta

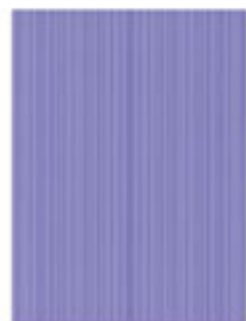
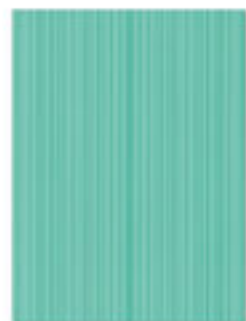
6200-A, 6207-B, 6207-C
Dark-Alpine Blue

6200-A, 6223-B, 6223-C
Dark-Aqua Marine

6200-A, 6224-B, 6224-C
Dark-S. Red

6200-A, 6225-B, 6225-C
Dark-Aqua Marine

6200-A, 6226-B, 6226-C
Dark-Mint Green



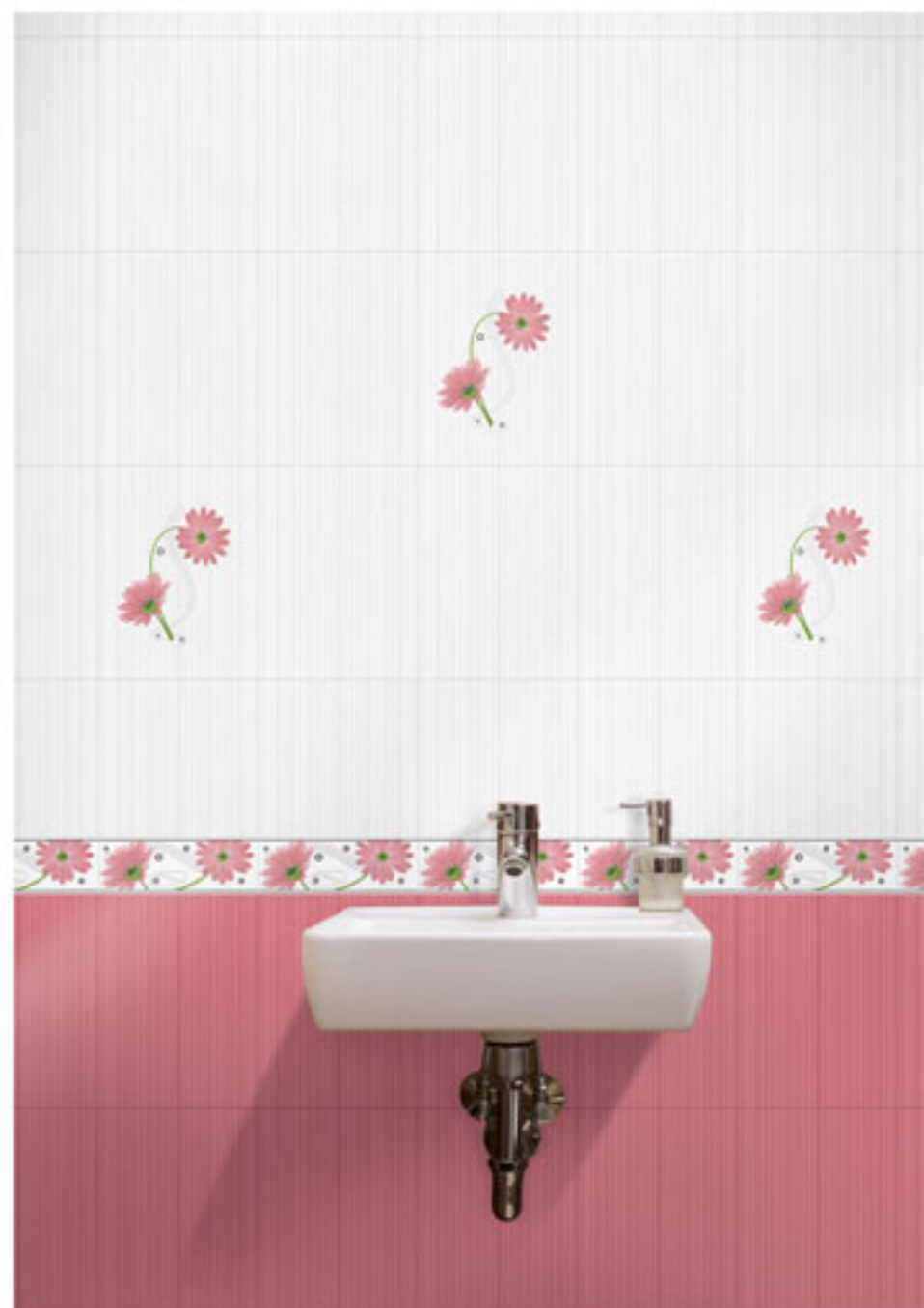
6200-A, 6227-B, 6227-C
Dark-Aqua Marine

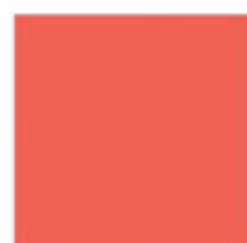
6200-A, 6232-B, 6232-C
Dark-S. Red

6200-A, 6234-B, 6234-C
Dark-Alpine Blue

6200-A, 6235-B, 6235-C
Dark-S. Red

6200-A, 6233-B, 6233-C
Dark-Magenta





6100-A, 6100-B, 6100-C
S. Red

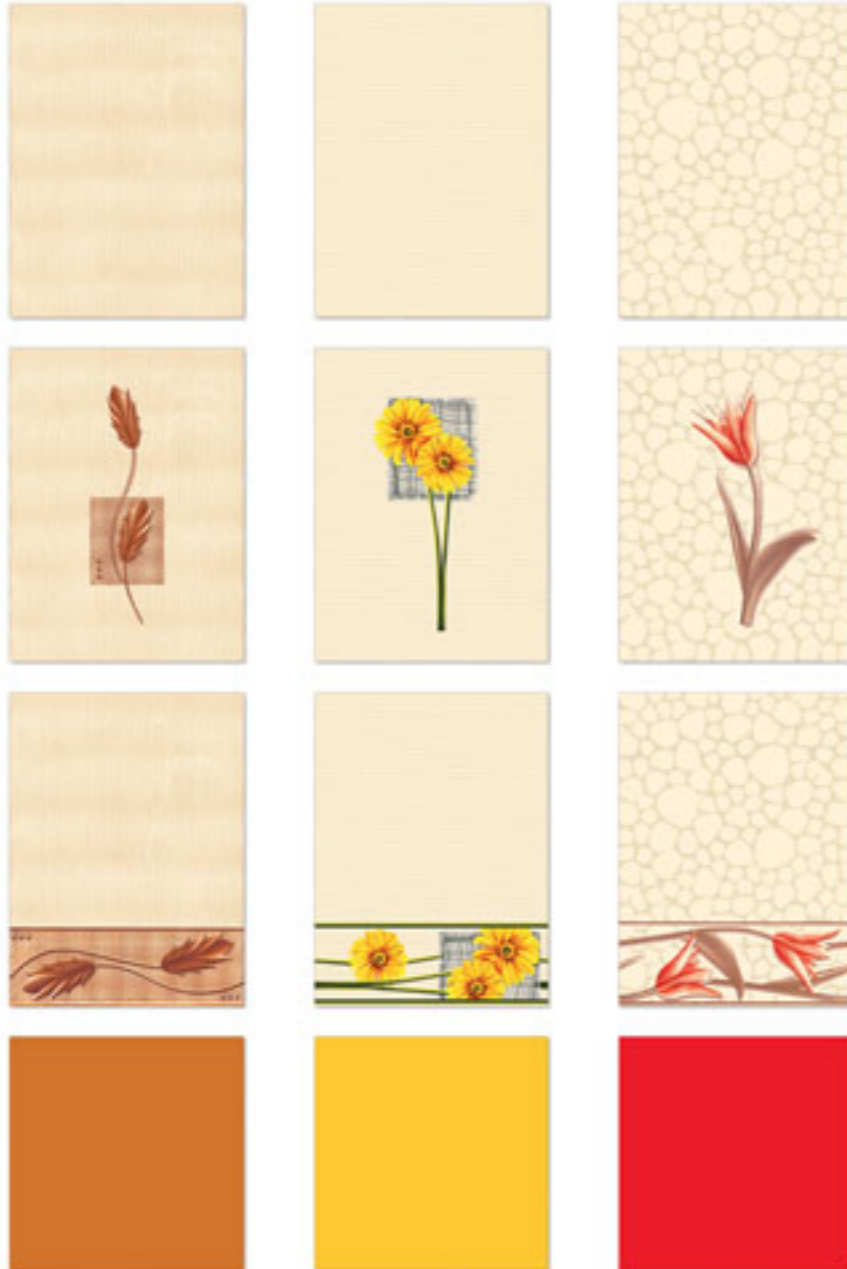
6100-A, 6101-B, 6101-C
S. Red

6100-A, 6102-B, 6102-C
Walker Yellow

6100-A, 6105-B, 6105-C
Condy Rosa

6100-A, 6109-B, 6109-C
Feiro

7001 A, 7001-B, 7001-C
C. Brown



7009 A, 7009-B, 7009-C
C. Brown

7014 A, 7014-B, 7014-C
Walker Yellow

7043 A, 7043-B, 7043-C
S. Red





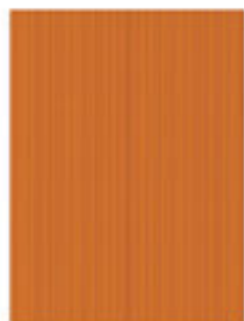
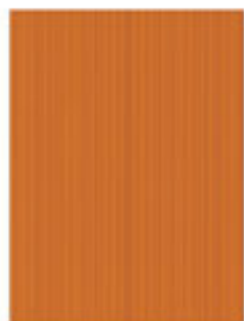
7200-A, 7200-B, 7200-C
Dark-C. Brown

7200-A, 7202-B, 7202-C
Dark-Mint Green

7200-A, 7203-B, 7203-C
Dark-C. Brown

7200-A, 7204-B, 7204-C
Dark-S. Red





7200-A, 7205-B, 7205-C
Dark-C. Brown

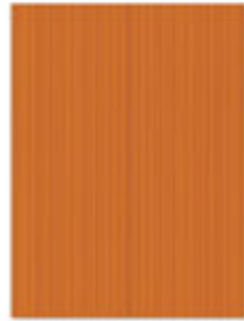
7200-A, 7206-B, 7206-C
Dark-C. Brown

7200-A, 7207-B, 7207-C
Dark-S. Red

7200-A, 7216-B, 7216-C
Dark-C. Brown

7200-A, 7223-B, 7223-C
Dark-S. Red

7200-A, 7224-B, 7224-C
Dark-C. Brown



7200-A, 7226-B, 7226-C
Dark-S. Red

7200-A, 7227-B, 7227-C
Dark-C. Brown

7200-A, 7232-B, 7232-C
Dark-C. Brown

7200-A, 7233-B, 7233-C
Dark-C. Brown





5570 A



5576



5570 A



5571



5572



5577



5573



5597



5578



5570 A



5581



5582



5583



5570 A



5570 A



5570 A



5570 A



5586



5589



5592



5595



5587



5590



5593



5596



5588



5585





5670 A



5670 A



5671



5676



5672



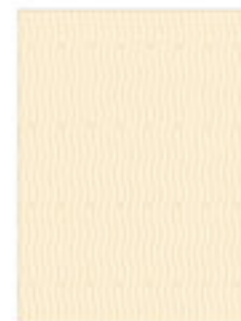
5677



5673



5695



5670 A



5670 A



5681



5686



5682



5689



5683



5692



9101



9103



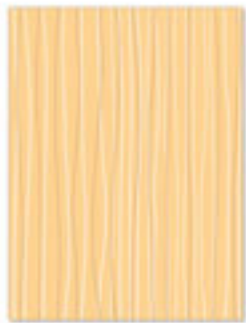
9105



9105



9201



9203



9204



9205



9107



9109



9110



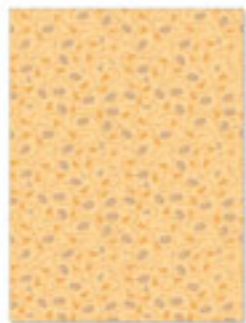
9116



9208



9209



9210



9216





9120



9121



9122



9124



9125



9142



9127



9128



9220



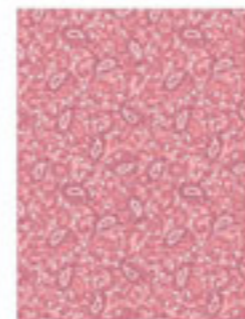
9221



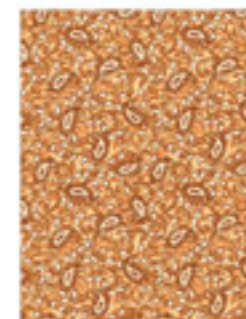
9222



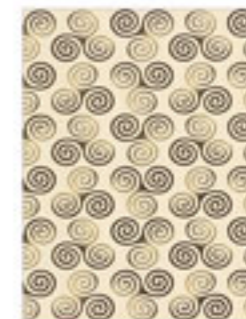
9224



9225



9242



9227



9228



9130



9131



9132



9133



9230



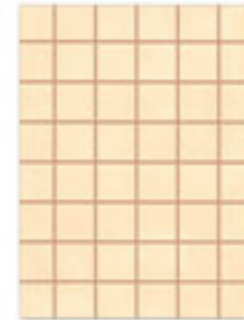
9231



9232



9233



9134



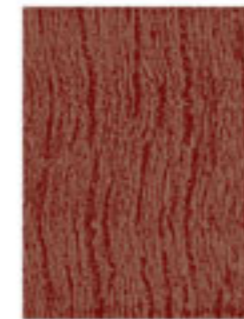
9136



9137



9234



9236



9237



9140



9141



9112



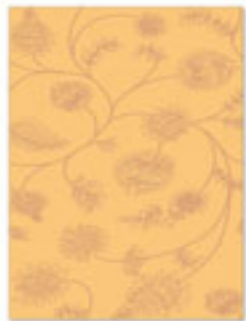
9112



9240



9241



9212



9213



9114



9143



9214



9243



9621



9622



9623



9624



9625



9626



9627



9721



9722



9723



9724



9725



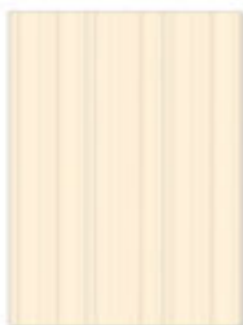
9726



9727



Stripe White



Stripe Ivory



Stripe Walker Yellow



Stripe Copper Brown



Stripe Black



Stripe Alpine Blue



Stripe Aqua Marine



Stripe Magenta



Stripe Mint Green

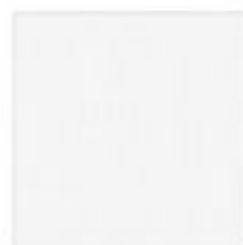


Stripe Orange



Stripe S.Red

250x250mm



Wave White



Wave Ivory



Wave Mint Green



Waves Aqua Marine



Wave Copper Brown



Wave Black



Wave Alpine Blue



Waves Magenta



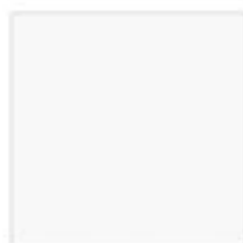
Wave Walker Yellow



Wave S. Red

SATIN MATT WAVE SERIES

REGULAR COLOURS



White



Ivory

SPECIAL COLOURS



Walker Yellow



Copper Brown



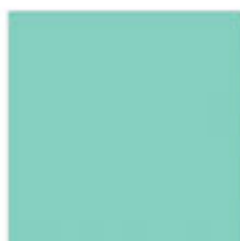
Black



Alpine Blue



Verde Green



Aqua Marine



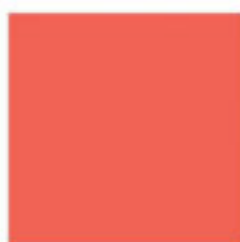
Magenta



Orange



Mint Green



Candy Rosa



S. Red

EXCLUSIVE COLOURS

Technical Specification

	CHARACTERISTICS	EURO STANDARDS EN - 159/IS 13755	SATELLITE VALUE		
DIMENSION & SURFACE QUALITY	1) Dimension & Surface Quality	±0.5%	±0.2%		
	2) Deviation in Thickness	±0.6 mm	±0.2 mm		
	3) Straightness of sides	±0.3%	±0.2%		
	4) Rectangularity	±0.5%	±0.3%		
	5) Surface Flatness	±0.5%	±0.3%		
	6) Surface Quality	Min 95%	Min 96%		
PHYSICAL PROPERTIES	1) Water Absorption	> 10%	14.17%		
	2) Bending Strength	> 150 Kg/Cm ²	200-250 Kg/Cm ²		
	3) Scratch hardness (Mohs)	Min 3	Min 3		
	4) Cracking	1 Cycle	No Cracking at 5 Cycles		
CHEMICAL PROPERTIES	1) Staining Resistance	Min Class 2	Resistance to all Acids And Alkalies & Household Chemicals, except Hydro Fluoric Acid		
	2) Household Chemical	Min Class B			
THERMAL PROPERTIES	1) Thermal Shock	Resistant to 10 Cycles	CONFORMS		
	2) Thermal Expansion	Max-9E- 06	CONFORMS		
PACKING DETAILS	Dimensions (mm)	Thickness (mm)	Tiles Per Box (pcs)	Area Coverage Per Box (sq. m.)	Average Weight Per Box (Kgs.)
	325 x 250mm	6.7	10	0.81	9.50
	250 x 250mm	6.7	13	0.81	9.50

Technical Specification

	CHARACTERISTICS	EURO STANDARDS EN - 159/IS 13753	SATELLITE VALUE		
DIMENSION & SURFACE QUALITY	1) Dimension & Surface Quality	±0.5%	±0.2%		
	2) Deviation in Thickness	±0.6 mm	±0.2 mm		
	3) Straightness of sides	±0.3%	±0.2%		
	4) Rectangularity	±0.5%	±0.3%		
	5) Surface Flatness	±0.5%	±0.3%		
	6) Surface Quality	Min 95%	Min 96%		
PHYSICAL PROPERTIES	1) Water Absorption	> 10%	14.17%		
	2) Bending Strength	> 150 Kg/Cm ²	200-250 Kg/Cm ²		
	3) Scratch hardness (Mohs)	Min 3	Min 3		
	4) Crazeing	1 Cycle	No Crazeing at 5 Cycles		
CHEMICAL PROPERTIES	1) Staining Resistance	Min Class 2	Resistance to all Acids And Alkalies & Household Chemicals, except Hydro Flouric Acid		
	2) Household Chemical	Min Class B			
THERMAL PROPERTIES	1) Thermal Shock	Resistant to 10 Cycles	CONFORMS		
	2) Thermal Expansion	Max-9E- 06	CONFORMS		
PACKING DETAILS	Dimensions (mm)	Thickness (mm)	Tiles Per Box (pcs)	Area Coverage Per Box (sq. m.)	Average Weight Per Box (Kgs.)
	325 x 250mm	6.7	10	0.81	9.50
	250 x 250mm	6.7	13	0.81	9.50

